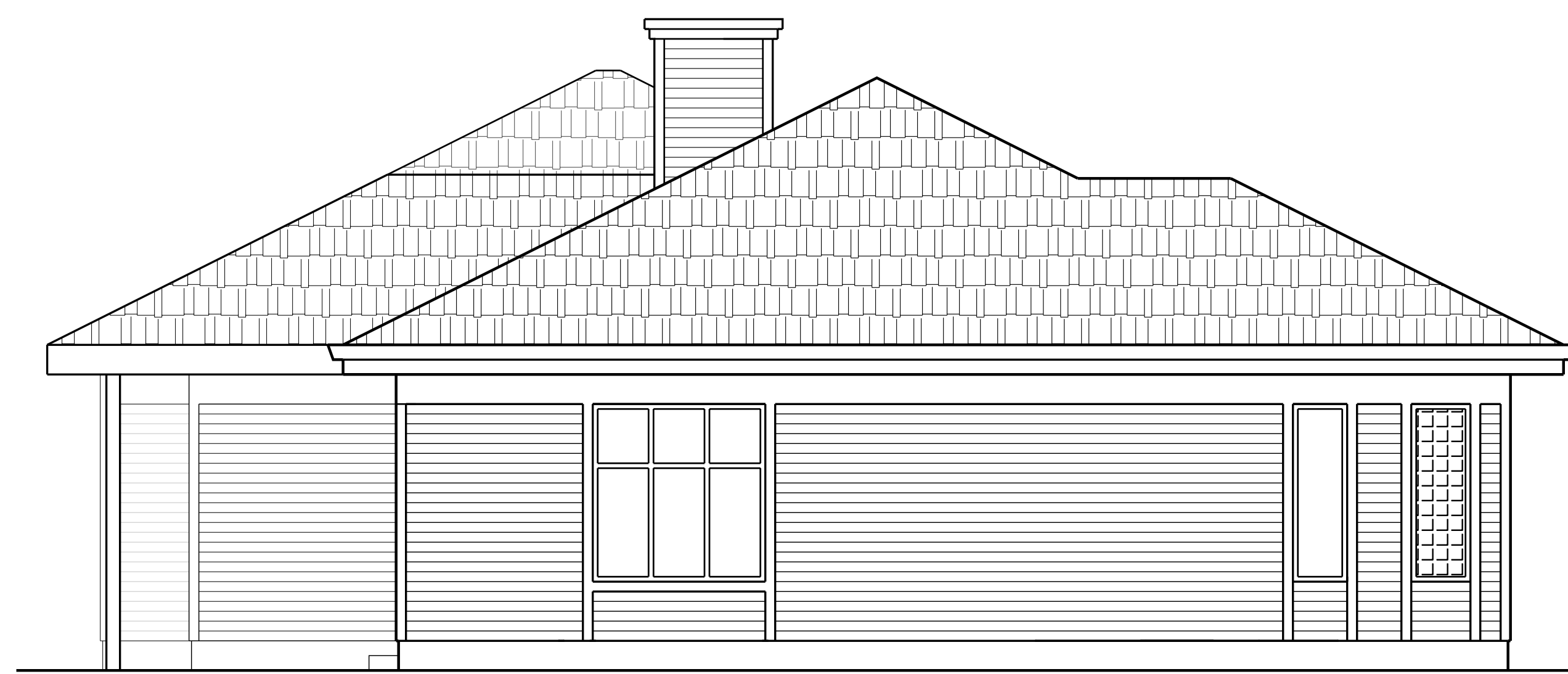
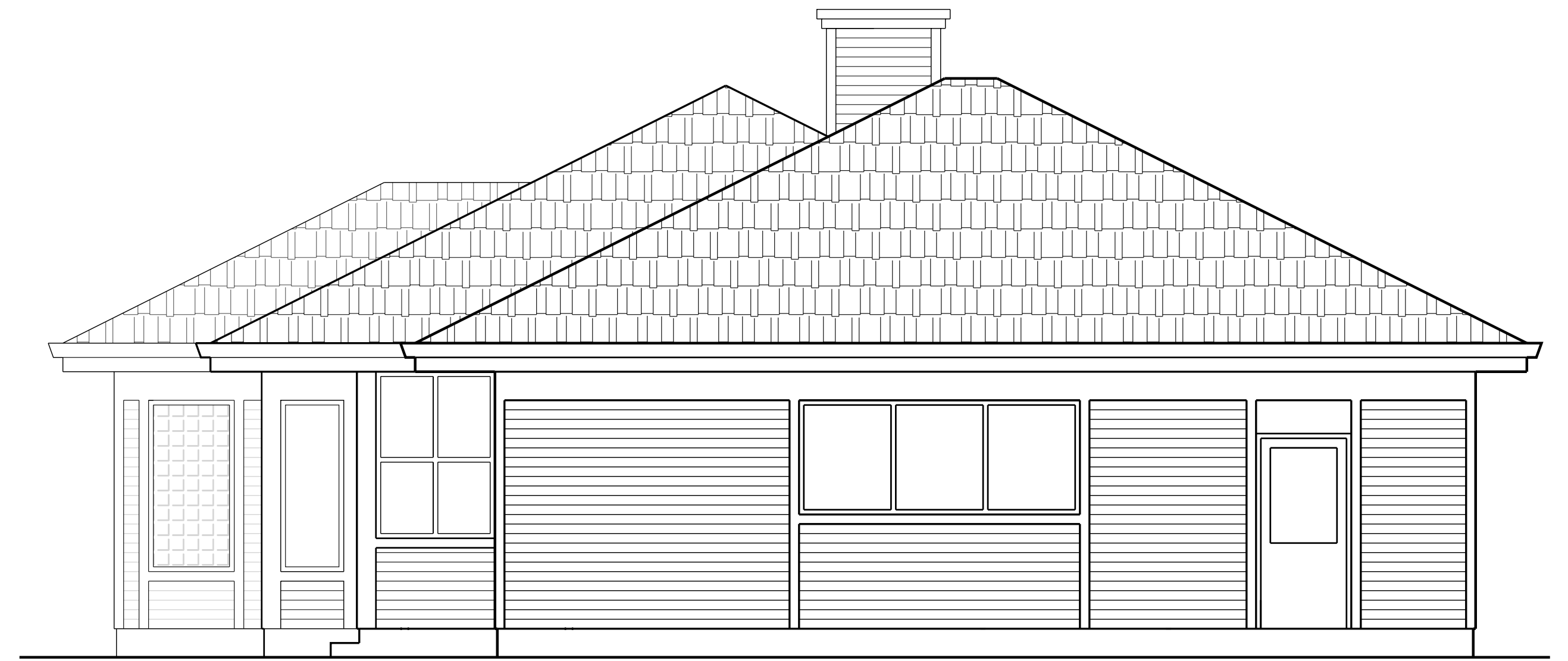




1 EXTERIOR ELEVATION - SOUTH
1/4" = 1'-0"



3 EXTERIOR ELEVATION - EAST
1/4" = 1'-0"



2 EXTERIOR ELEVATION - WEST
1/4" = 1'-0"



4 EXTERIOR ELEVATION - NORTH
1/4" = 1'-0"